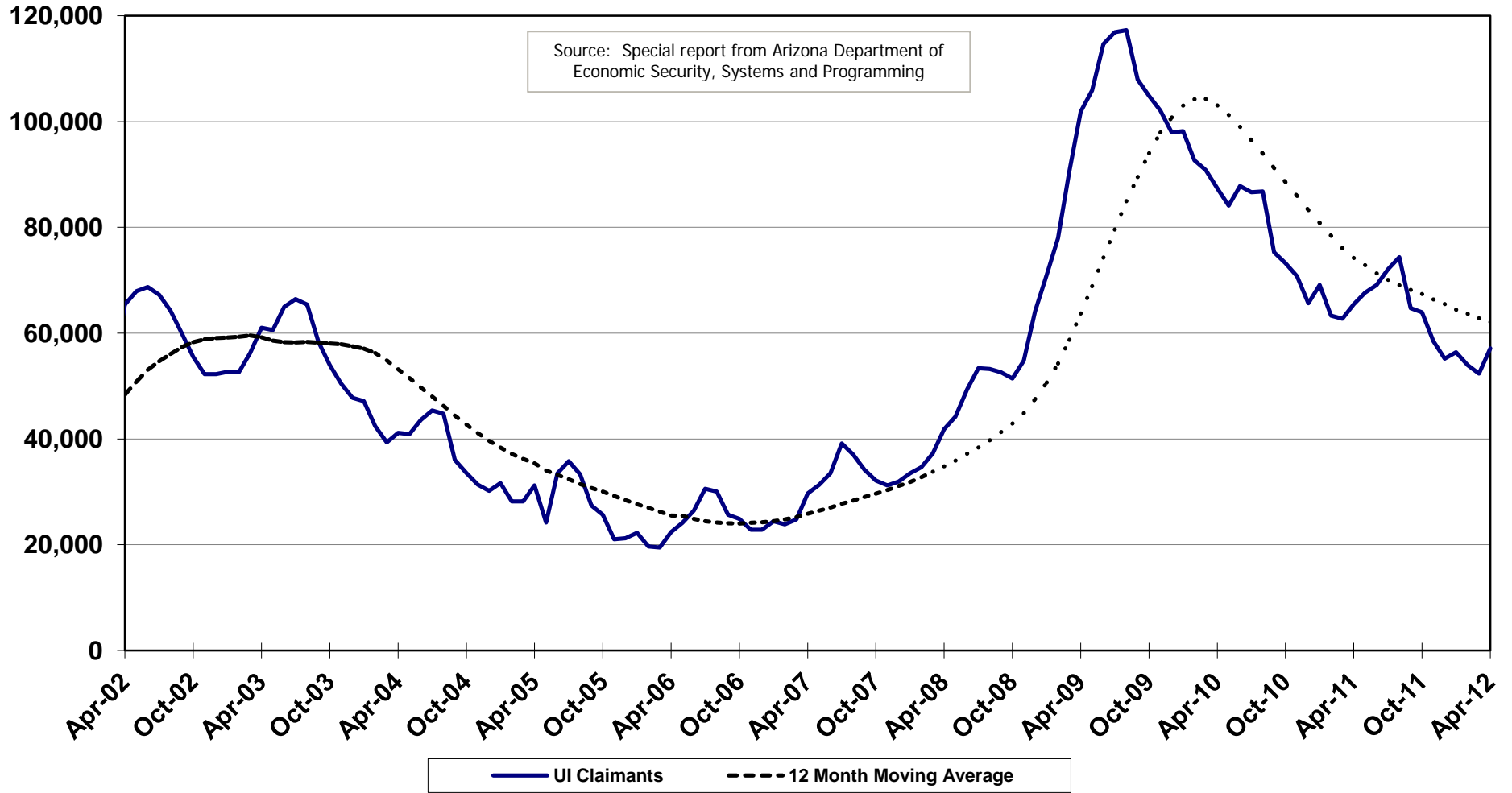
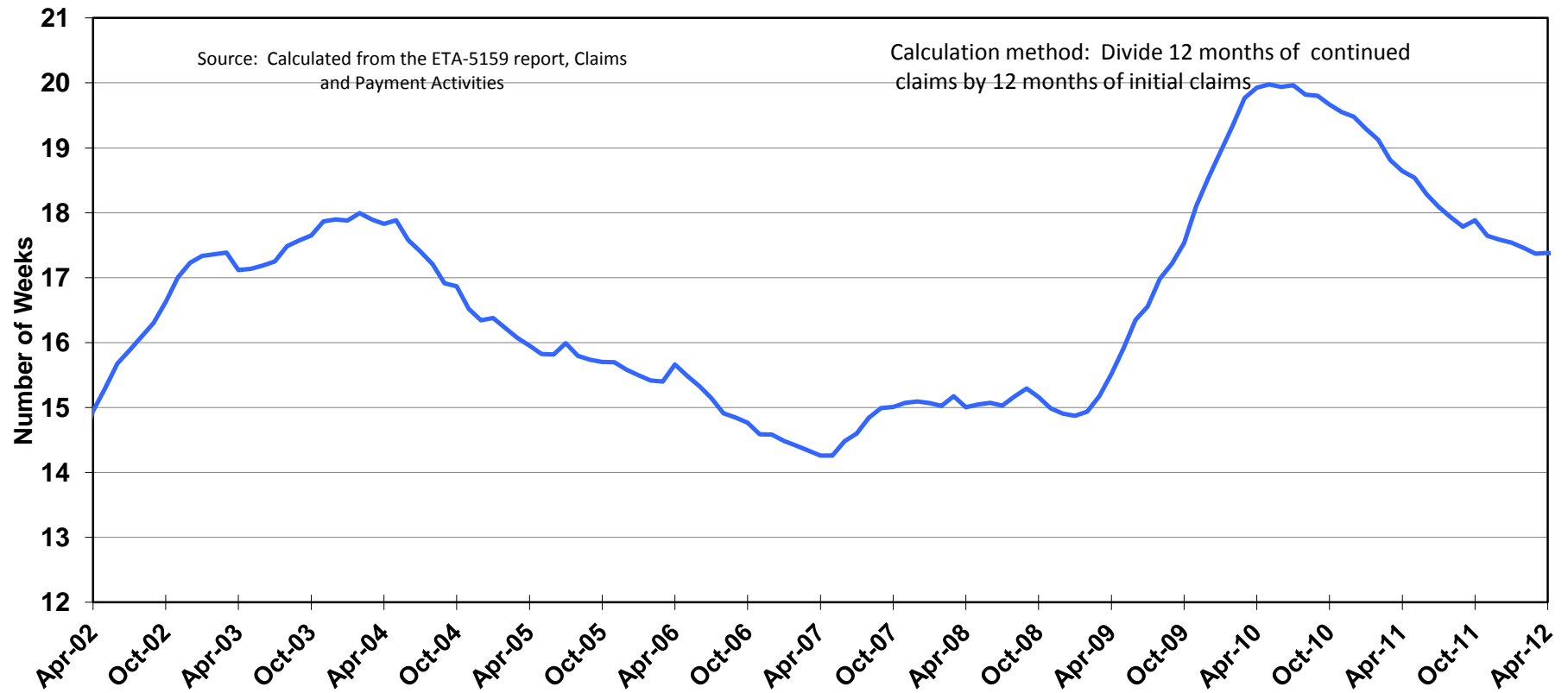


# 1. Claimants Receiving Unemployment Insurance Benefits

from April 2002 to April 2012



## 2. Average Duration of Unemployment Insurance Payments from April 2002 to April 2012



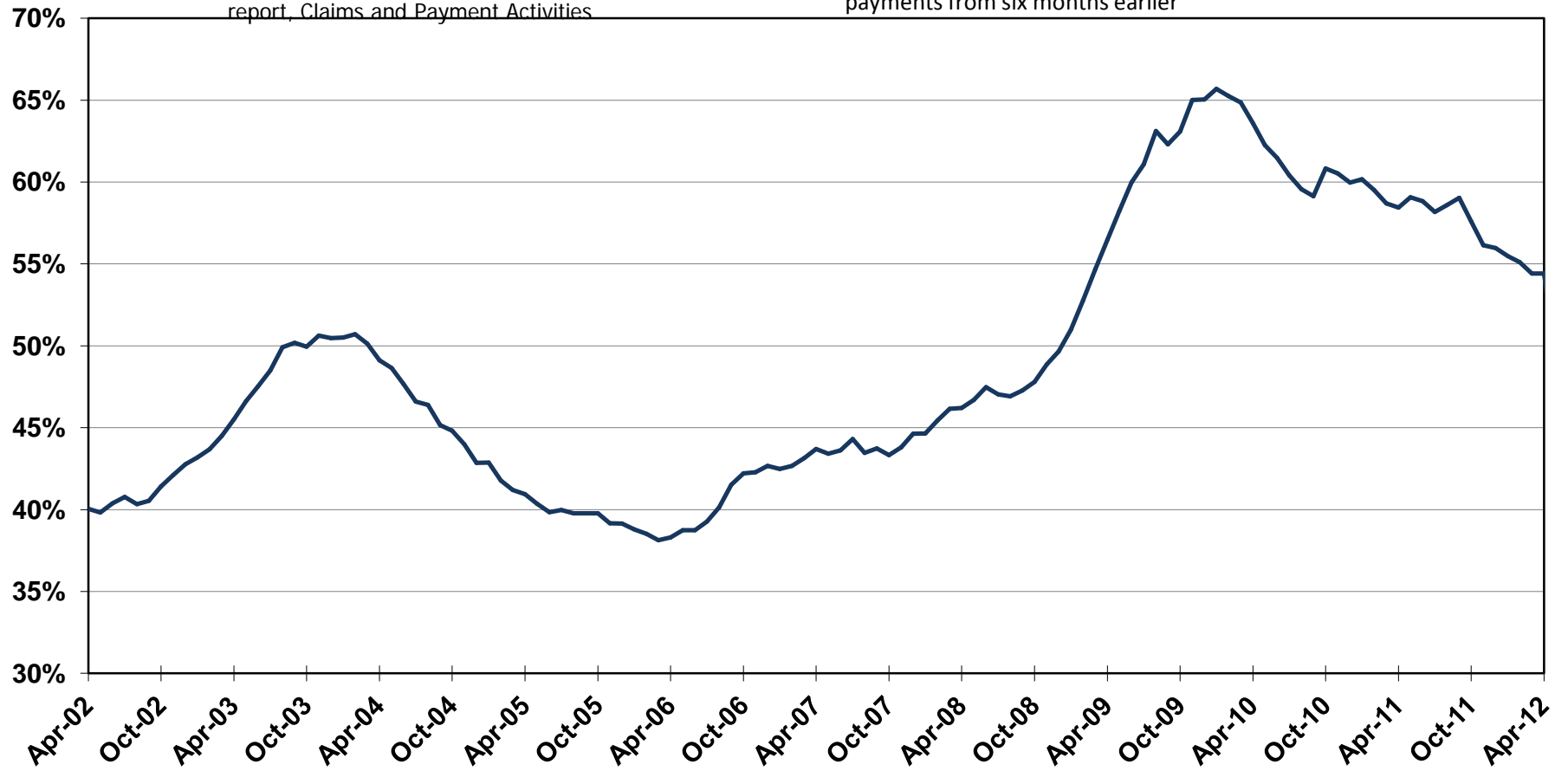
### 3. Unemployment Insurance Exhaustion Rate

from April 2002 to April 2012

12-Month Moving Average

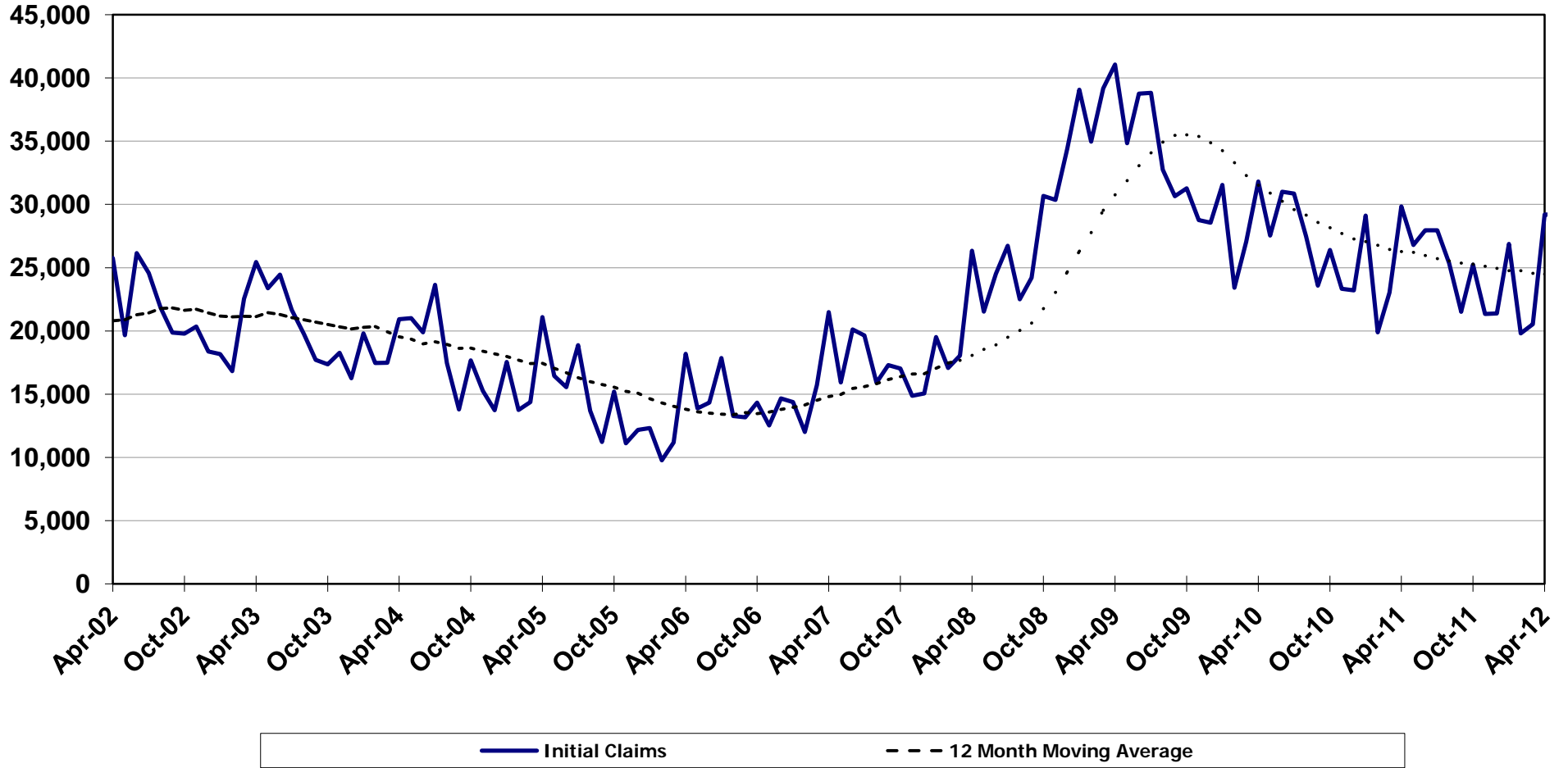
Source: Calculated from the ETA-5159 report, Claims and Payment Activities

Calculation method: Final payments as a percentage of first payments from six months earlier



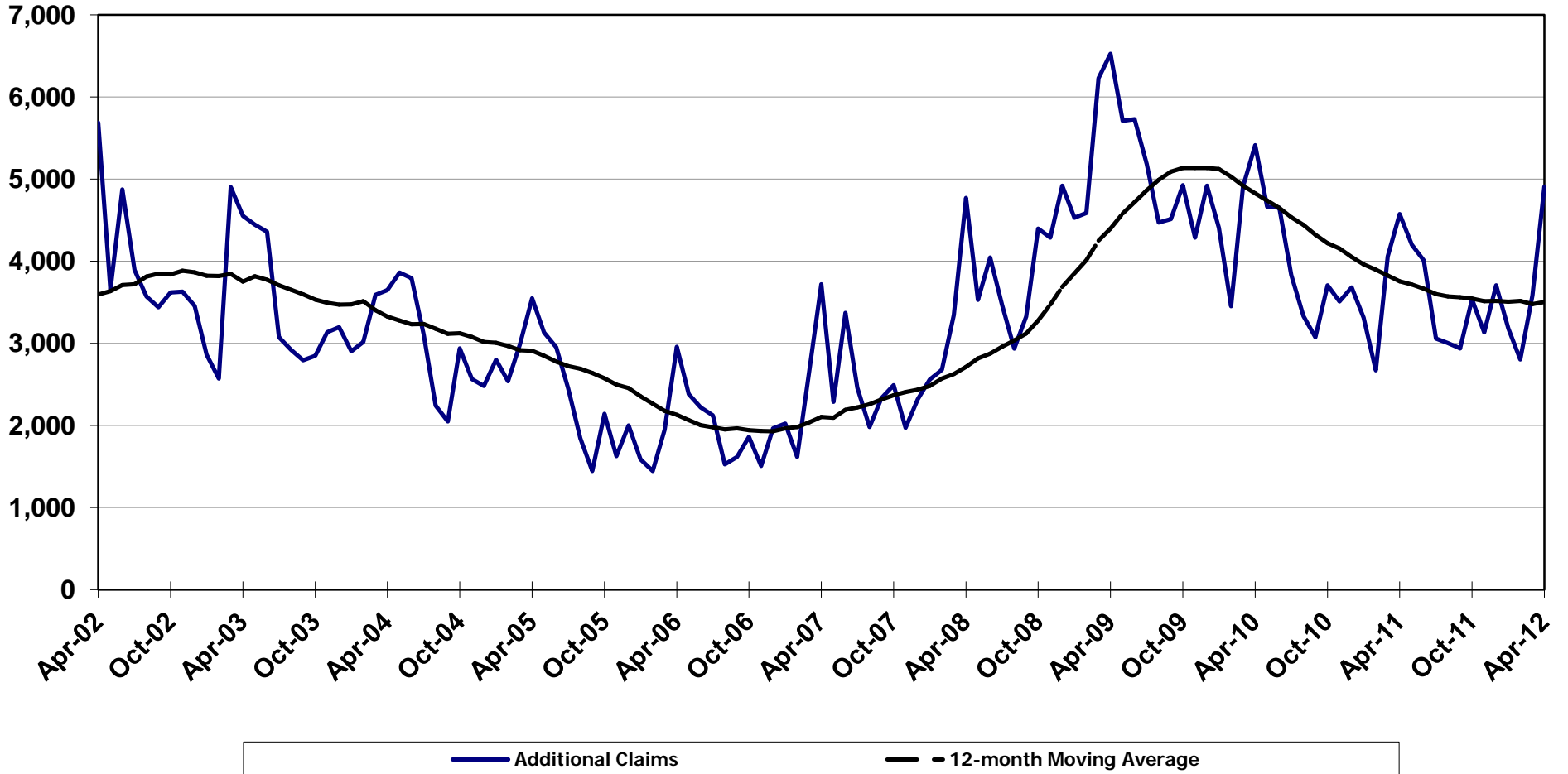
## 4A. Initial Claims from April 2002 to April 2012

Source: ETA-5159 report, Claims and Payment



## 4B. Additional Claims from April 2002 to April 2012

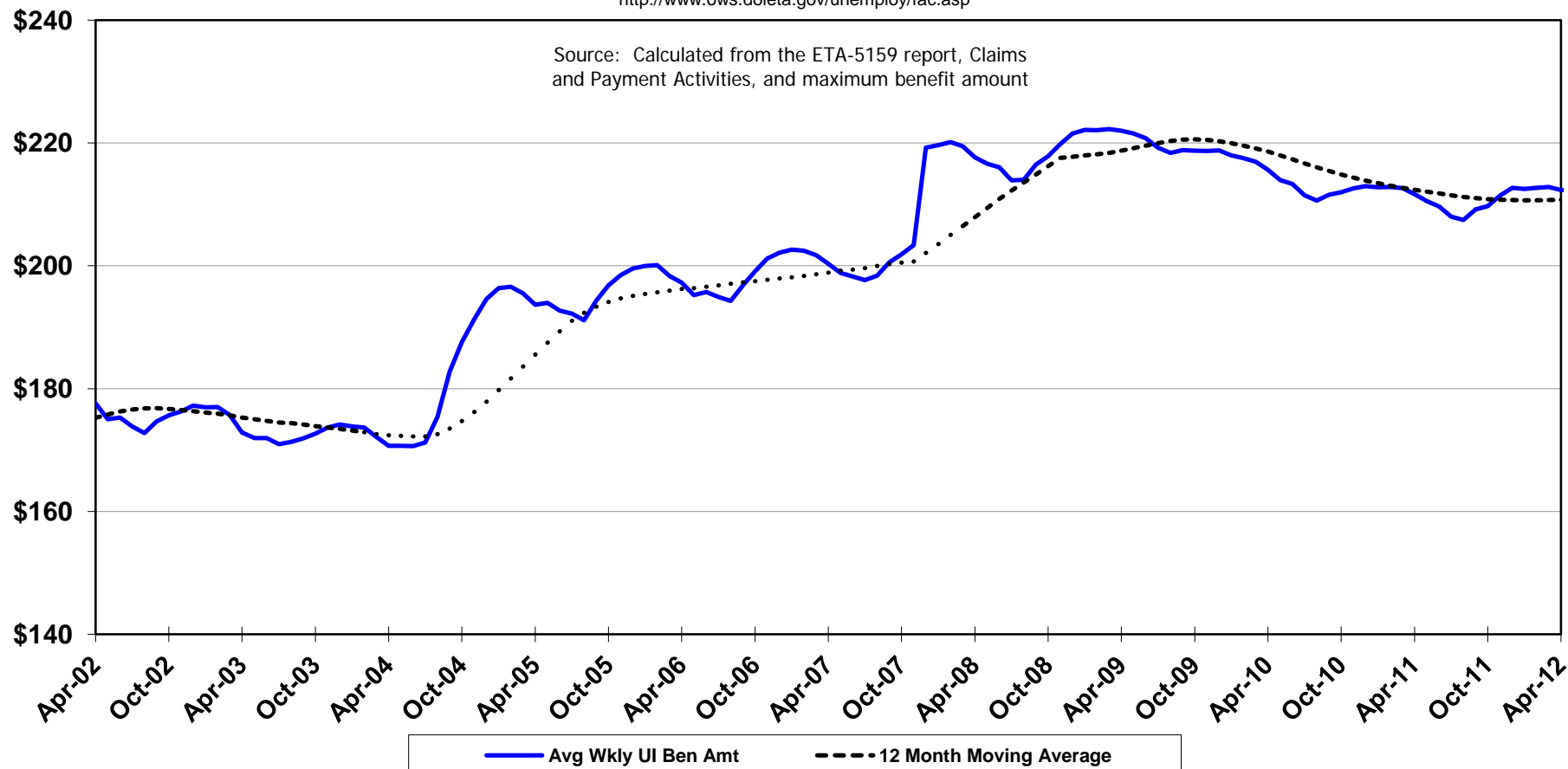
Source: ETA-5159 report, Claims and Payment



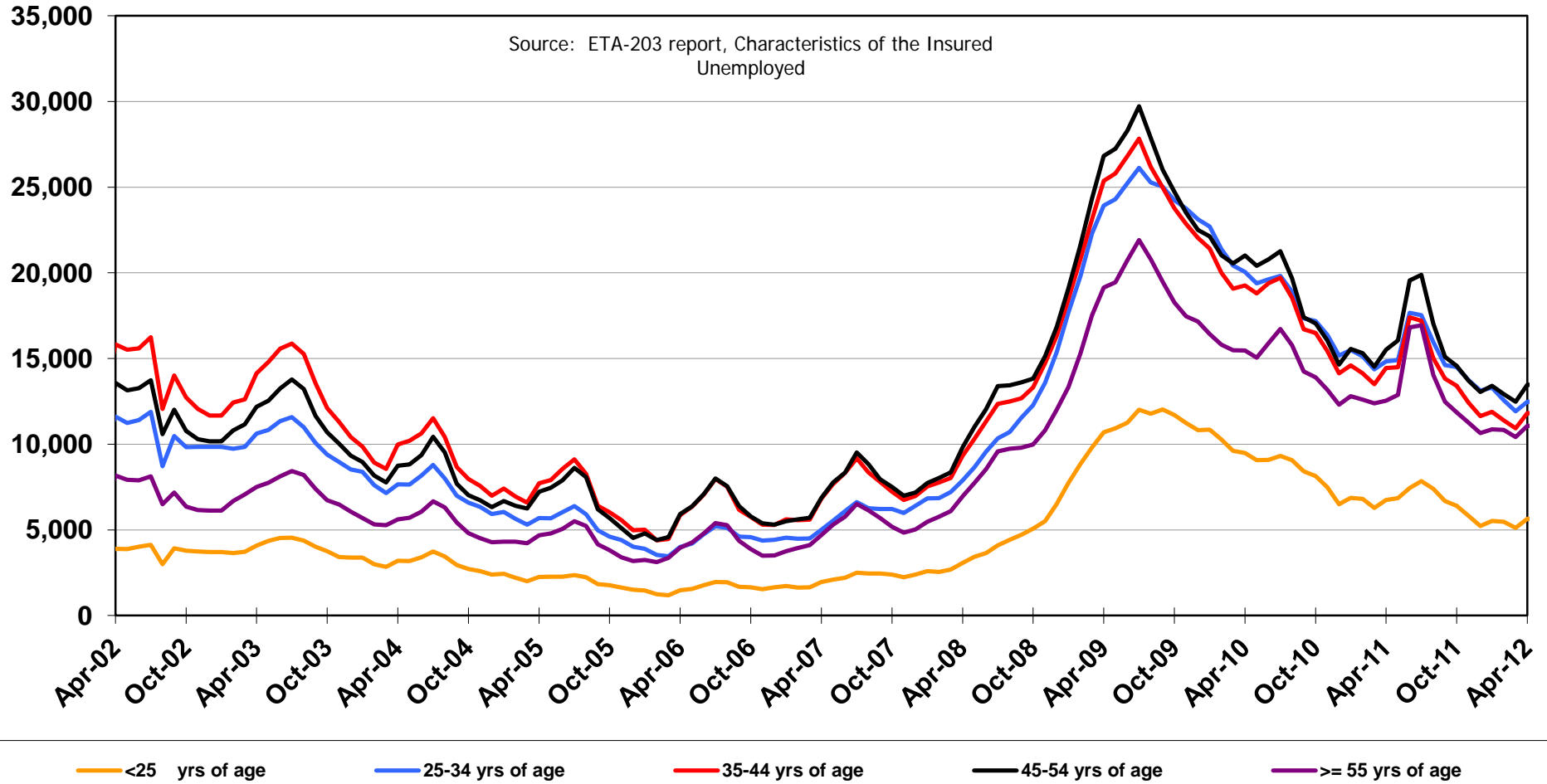
## 5. Average Weekly UI Benefit Amount from April 2002 to April 2012

Prepared by: Arizona Department of Administration  
Excludes Federal Additional Compensation amount of \$25  
<http://www.ows.doleta.gov/unemploy/fac.asp>

Source: Calculated from the ETA-5159 report, Claims  
and Payment Activities, and maximum benefit amount



## 6. UI Claimants by Age from April 2002 to April 2012



## 7. Gender of Claimants from April 2002 to April 2012

